

Who said you can't have complete control over client onboarding? Once you close a deal, Setuply™ empowers you to realize its potential faster.

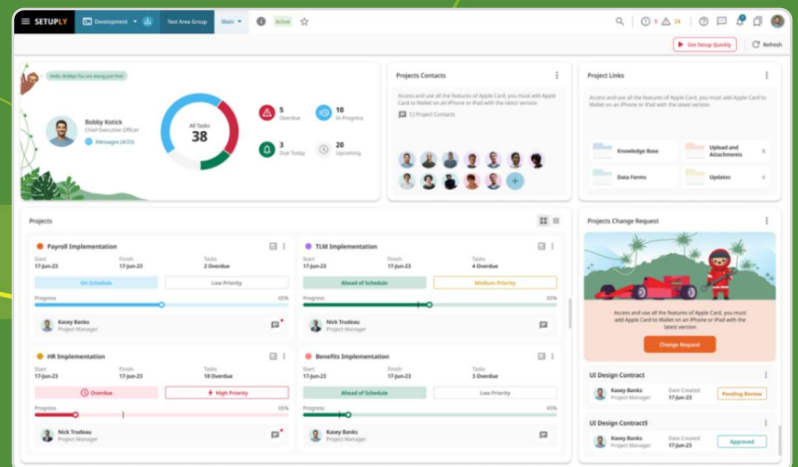
How Setuply Helps You Get Ahead of the Pack

With Setuply's AI-powered market-leading client onboarding and lifecycle management platform, B2B solution providers can accelerate revenue recognition, reduce churn, lower delivery costs, driving long-term success and profitability

- Leverage Setuply to anticipate and handle just about any business scenario
- Intuitive interface ensures clear stakeholder visibility and collaboration using
- Reduce budget, scope, and timeline overruns with scalable automation
- Streamline internal and external cross-functional connectivity

Performance and Scale

Optimize time to revenue for business clients, increase team capacity, and reduce the implementation backlog.



Accelerate Revenue and Reduce Delivery Costs



Recognize value faster



Optimize team capacity



Give clients peace of mind



Secure data management

Request a
Demo Today:



www.Setuply.com/start

REMOVE THE BARRIERS

Between closing the deal
and realizing its potential



Modernize Your Operating Toolkit and Soar Above the Rest with Setuply's Powerful Solutions Featuring:

- Scale^{UP} Onboarding Engine
- Client IMPACT Control Panel
- User-Specific Dashboards
- Secure Data Staging & Management
- Professional Services Automation
- Case Management
- Rich integrations for connected experience

To leverage the customer inflow, solution providers must strategically adapt next generation onboarding solutions to scale implementations and beyond, ensuring client satisfaction & supporting more sales.

Setuply drives providers in a broad range of industries including HRTech, Fintech, Regtech, Insuretech, Govtech, and more...

**Request a
Demo Today:**

www.Setuply.com/start

